

## Installation and Replacement of Tronix Explorer XT Batteries

Preferred Battery: (2) 12V 7Ah **Sealed Lead Acid Batteries**

Voltage per unit : 24V

Brand : CSB Battery (or equivalent)

**Important:** Before you start replacing the battery make sure that the unit is turned OFF and not connected to any device as it may result to electric shock.

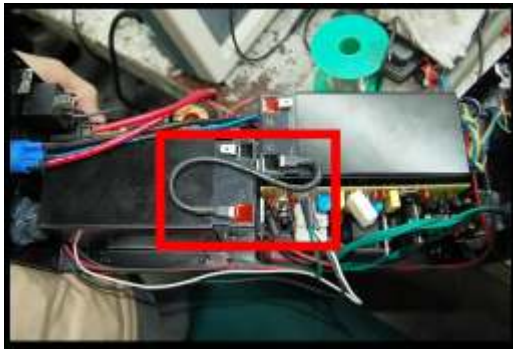
**To replace the battery of Tronix Auxiliary Battery, complete the following procedure:**

1. Remove the screws of the cover located at the sides and top portion of the unit.

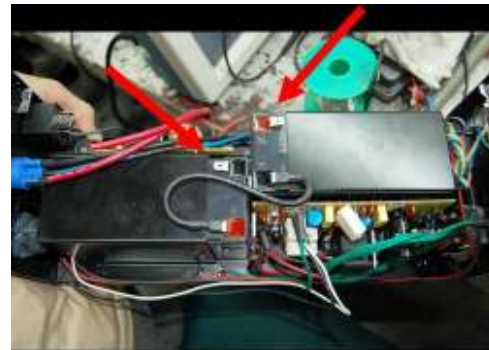


IMAGE 1

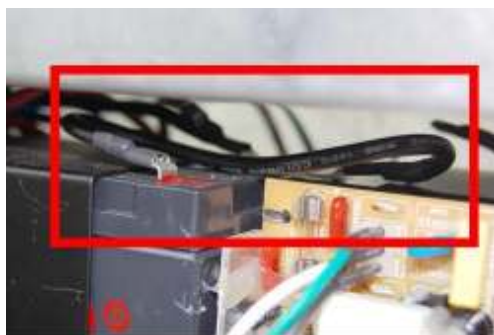
2. Remove the cover and make sure to place all removed screws in one container to avoid misplacing them.
3. Once the cover has been removed, carefully disconnect the battery terminals located in the boost converter side and the battery connector (the **S** cord that connects the 2 batteries) located in the charger board side from the battery to avoid short circuit.



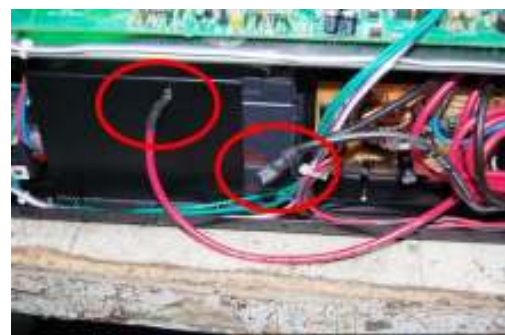
TOP VIEW OF BATTERY CONNECTOR  
IMAGE 2



TOP VIEW OF NEGATIVE AND POSITIVE TERMINALS  
IMAGE 3



SIDE VIEW OF BATTERY CONNECTOR  
(BOOST CONVERTER SIDE)  
IMAGE 4



SIDE VIEW OF NEGATIVE AND POSITIVE TERMINALS  
(CHARGER BOARD SIDE)  
IMAGE 5

- Remember the position of the wires to ensure correct installation later.
4. Remove the charger board located at the sides of the batteries. The charger board serves as DC charger of the batteries inside.

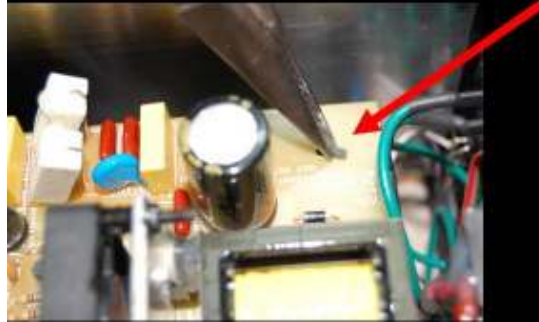


IMAGE 6

5. Remove the screw of battery bracket and the screw under the battery casing.



IMAGE 7

6. Remove the battery bracket and the battery at the same time.
7. Turn the unit to the other side and remove the boost converter board.



8. Remove the screw of battery bracket and the screw under the battery casing.
9. Slide the battery out of the battery casing.
10. Securely place the new battery sliding it to the battery casing and tighten the battery bracket screws and install the boost converter board.
11. Turn to the other side and make sure to place the batteries inside the metal enclosure first and reinsert the bracket screws and put back the charger board before you connect the battery terminals and connector.
  - Make sure that the battery terminals will not touch the heat sink. (please see image below) For safety, you can put masking or electrical tape on the area of the heat sink where the battery terminals will pass during battery installation and replacement.



**Attention:** Remember to take note of the polarity of the wire and do not interchange them otherwise the unit will be damaged. Black wire is for negative terminal (-) and red wire is for positive terminal (+)

12. Reinsert the screws of the unit cover.
13. Make sure to tighten all screws.

**Caution:** It is important that this be done correctly. You can damage your unit and possibly injure yourself if something goes wrong.